



CASE STUDY | RWE Dea AG

RWE Dea Migrates Large Data Volumes in All Security Using migration-center

RWE Dea uses migration-center by fme in order to classify and move large volumes of documents into the Documentum repository.

The Need to Migrate Large Document Volumes

RWE Dea AG was looking for a software solution to transfer 165,000 documents from a local system into an EMC Documentum repository. Moreover, there was a continuous need for scanning paper documents and making them available within Documentum in the form of PDF files.

Requirements for the Mass Import of Documents

Regarding the selection of a software tool for document migration, three criteria needed to be satisfied: file attributes for import had to be accurately defined; the document migration had to be run largely automatically; a secure verification was needed to prove that indeed all documents were being transferred free of error.

Functional Richness and Reliability Speak for Migration-Center

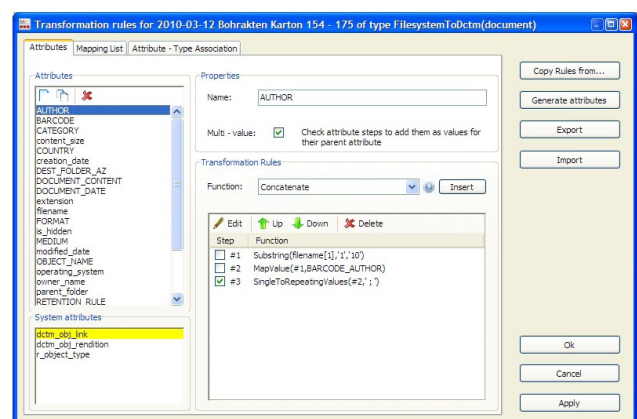
- During a first pilot project 8,500 PDF files were successfully transferred using migration-center.
- In a test run, all errors, such as incorrectly assigned attributes, could be eliminated prior to import.
- In comparison with another software tool which had been used till then, migration-center proved to be more reliable.

Meanwhile, RWE Dea AG is well satisfied with migration-center and happy to recommend this out-of-the-box software tool for the migration of large document volumes.

Bert Köhler, project leader at RWE Dea AG, says: »After comparing a range of products, we were impressed by the functional richness of migration-center. The product has proven to be very flexible and we shall therefore use it on a permanent basis for the consolidation of large document pools.«

VORWEG GEHEN

RWE Dea AG, based in Hamburg – Germany, is an international player in the field of oil and gas exploration and production. The company uses advanced exploration and production technologies relying on the vast know-how accumulated during its 110 years of company existence.



Migration using tailored transformation rules