

fme D2 Contract Management Framework

Flexible, efficient and secure OpenText Documentum D2 based solution

The continuously growing number of contracts and their precise handling is a constant challenge to many organizations. Inefficient contract authoring and monitoring, an overhasty copying of contract clauses or a lack of visibility between the contract parties often result in a loss of accuracy, mistakes and time-consuming renewals. fme's D2 based Contract Management Framework helps clients to efficiently manage their contracts and ensures that they are accurately recorded and audited to meet compliance guidelines.

Contracts drive many business processes. Purchasing contracts, licensing contracts, employee contracts, services contracts and various other types of contracts build the foundation of many activities in large and mid-sized companies. The manual creation, reviewing, approving, printing, mailing or faxing back-and-forth of contracts is error-prone and requires a lot of valuable time. Traditional processes are becoming more and more inefficient.

The Solution: A Global Contract Repository

The fme Contract Management Framework is based on OpenText Documentum D2 – a document management system as backbone. This presents the advantage of

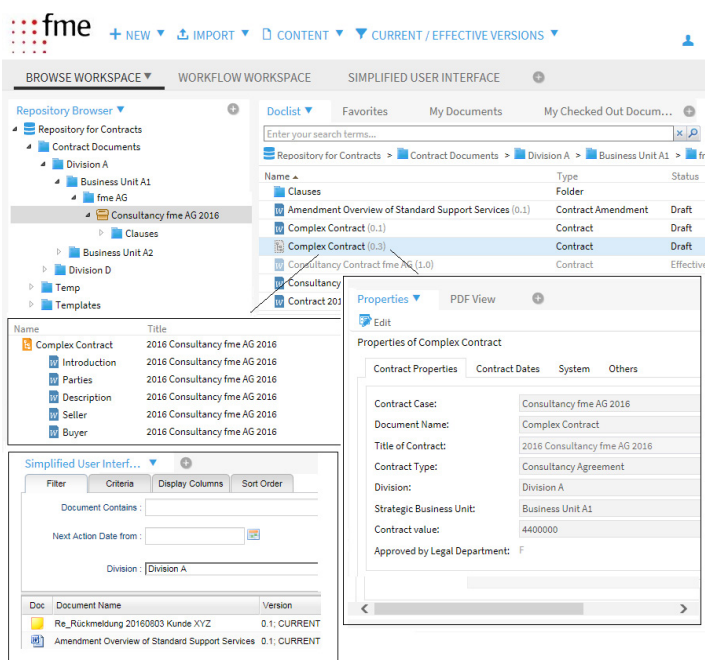
Key Features

- Metadata dictionaries for easy indexing
- Set of pre-configured metadata adjustable to actual needs
- Contract review and approval workflows
- Contract lifecycle status management incl. revisions, renewals and amendments
- Management of contract templates and clause library
- Activity and timeline management with notifications and alerts
- Contract retrieval by full text and customer specific search forms
- Flexible user workspaces based on user roles
- Paper capture (imaging & OCR)
- Integration into existing digital signature solution
- Reporting and analytics (e.g. # of contracts not effective)
- Mobile access (Android / IOS / Win10)
- MS SharePoint access

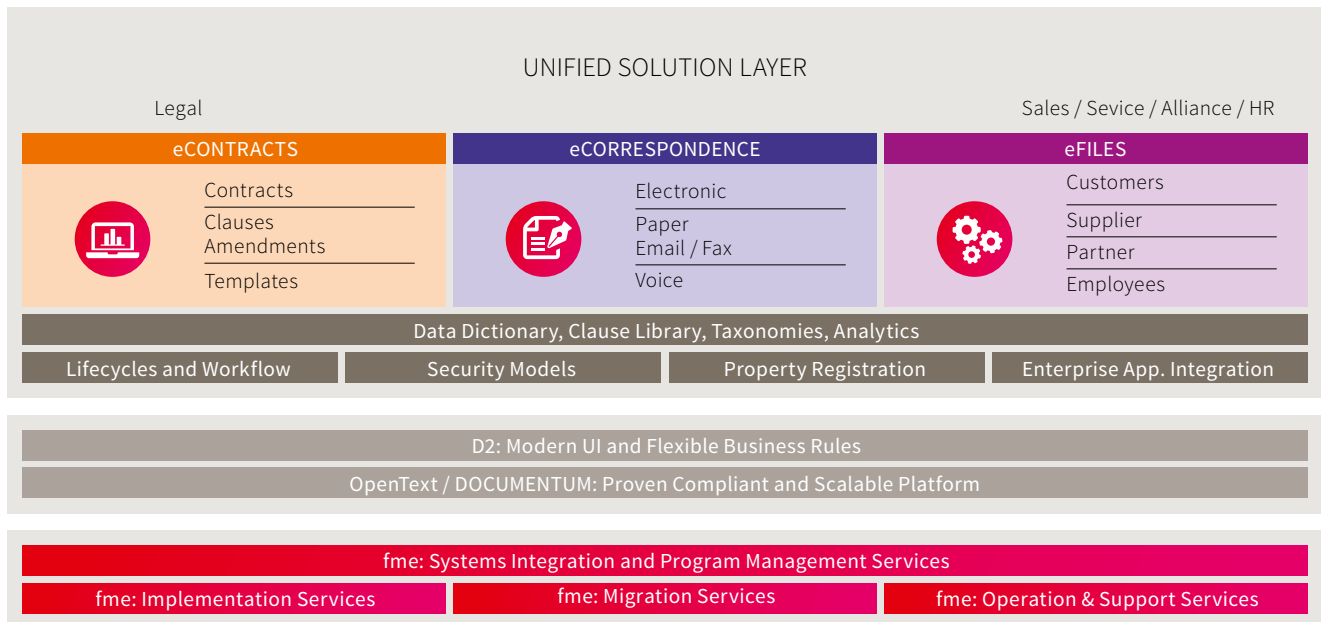
providing a »single point of truth«, where the version and lifecycle status of each contract are displayed clearly. Besides, a powerful workflow management engine supports the business processes during the lifecycle of each contract.

Our Offering

Looking back at 15+ years of experience in Enterprise Content Management (ECM) with global clients as well as mid-size manufacturers and various successful contract management projects we developed the fme D2 Contract Management Framework with its 360° Professional Service. We support you throughout the whole lifecycle: from process analysis & solution design and installation & configuration through to customization & integration as well as 24/7 global operation & support.



Advanced search functionality with preconfigured searches based on the standard D2 functionalities and an additional simplified user interface for specific searches and reporting are built into the D2 client.



You are not using the proven OpenText Documentum D2 platform, the basis for your future contract management solutions, yet? We are able to migrate your content with our leading product migration-center from any source system to D2 – project based or ongoing as Migration Factory. For specific migration paths with the target of D2 based systems migration-center even supports a so called in-place migration to streamline the process. Object IDs and audit trail entries remain during this conversion.

With our ECM, contract management and content migration expertise as well as proven Prince 2-based project management methodology, we will make your project a success. No matter if on premise or off premise, fme is your partner of choice.

Contract Clause Library

A Contract Clause Library allows the central management of clauses. The library is used to compose contracts of already reviewed and internally approved text blocks, which are organized as part documents and serve as contract template parts. This reduces risks of inconsistency and ensures organizational compliance. It also allows to track the usage of clauses and to identify affected contracts if there is a need to change a clause.

Solution Building Blocks And The Power Of D2

The fme Contract Management Framework is based on the OpenText Documentum D2 configuration layer. Business rules are configured, not hard-coded. Thus, organizational changes or future business process changes can be upgraded and adapted more easily. The D2 rule base ensures

a configured document management. Further, the new D2 front end technology provides a powerful search and navigation and a dynamic security configuration allows granting users access to specific contract characteristics based on rules. Access rights can be assigned to previously created groups of e.g. business partners permitting them access to their specific contracts while other contracts stay invisible. The OpenText Documentum D2 workflow engine routes contracts for reviewing and approval – according to the rules defined within D2 – to the relevant reviewer and approver groups. Moreover, the business rule bank notifies and alerts relevant groups and users upon future time milestones.

Solution Delivered Your Way – On Premise Or Off Premise (In The Cloud)

Today's organizations need to maximize their resources and budgets in a way that enables innovation, seamless business processes and quick responses to changing business needs while ensuring that their security, privacy, and control requirements are met. Whether you are deploying in the cloud or on premise, there is no one-size-fits-all best fit.

With fme's comprehensive portfolio of services that offer flexibility, agility, and security, we deliver solutions your way to meet your specific needs – private, public, hybrid cloud or traditional on premise.

We look forward to your challenge!